

TEMPLETON AREA REDEVELOPMENT

COMMUNITY INFORMATION SESSION

FEBRUARY 7, 2019



Discussion Topics

- Context
- Project Overview
- Community Concerns and Mitigations
- Engagement Program and Phase 3 Reporting
- Next Steps
- Q&A

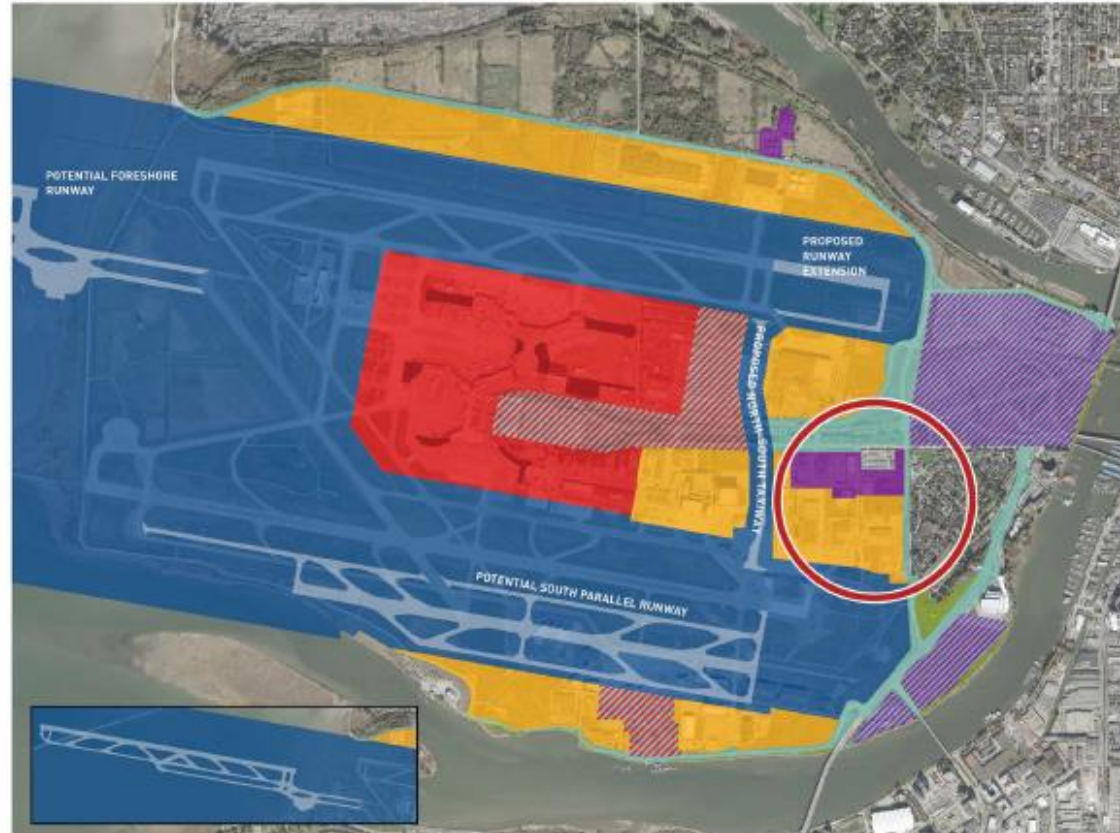




Master Plan & Land Use Plan

2017 LAND USE PLAN

- 10 Year Review Cycle
- Templeton zoned for operational use, Groundside Commercial & Airside since at least 1989
- Federal Approval 2018



YVR recognizes that Sea Island holds historical and cultural significance to Musqueam and that recorded and unrecorded heritage resources are present.

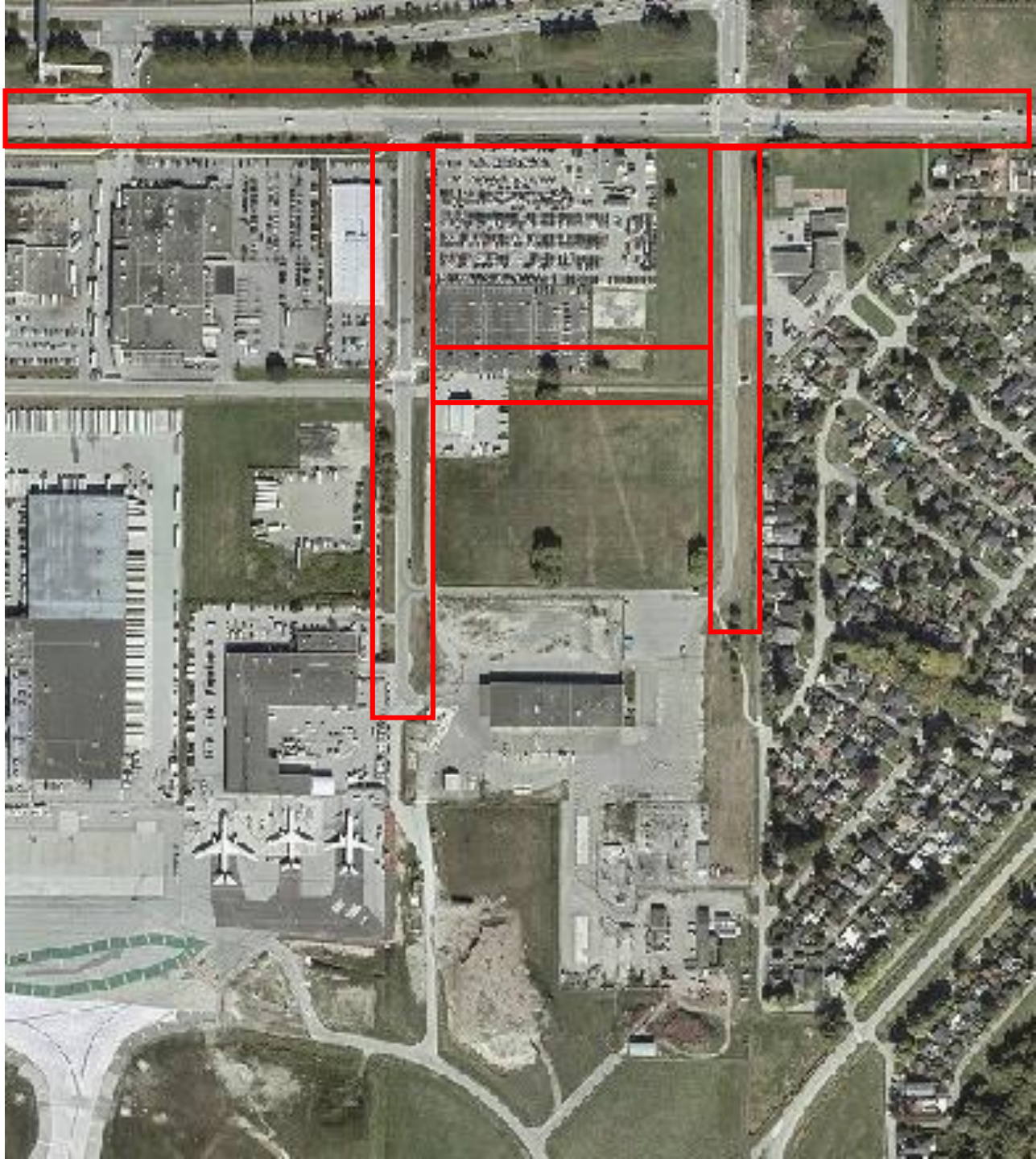


PROJECT OVERVIEW



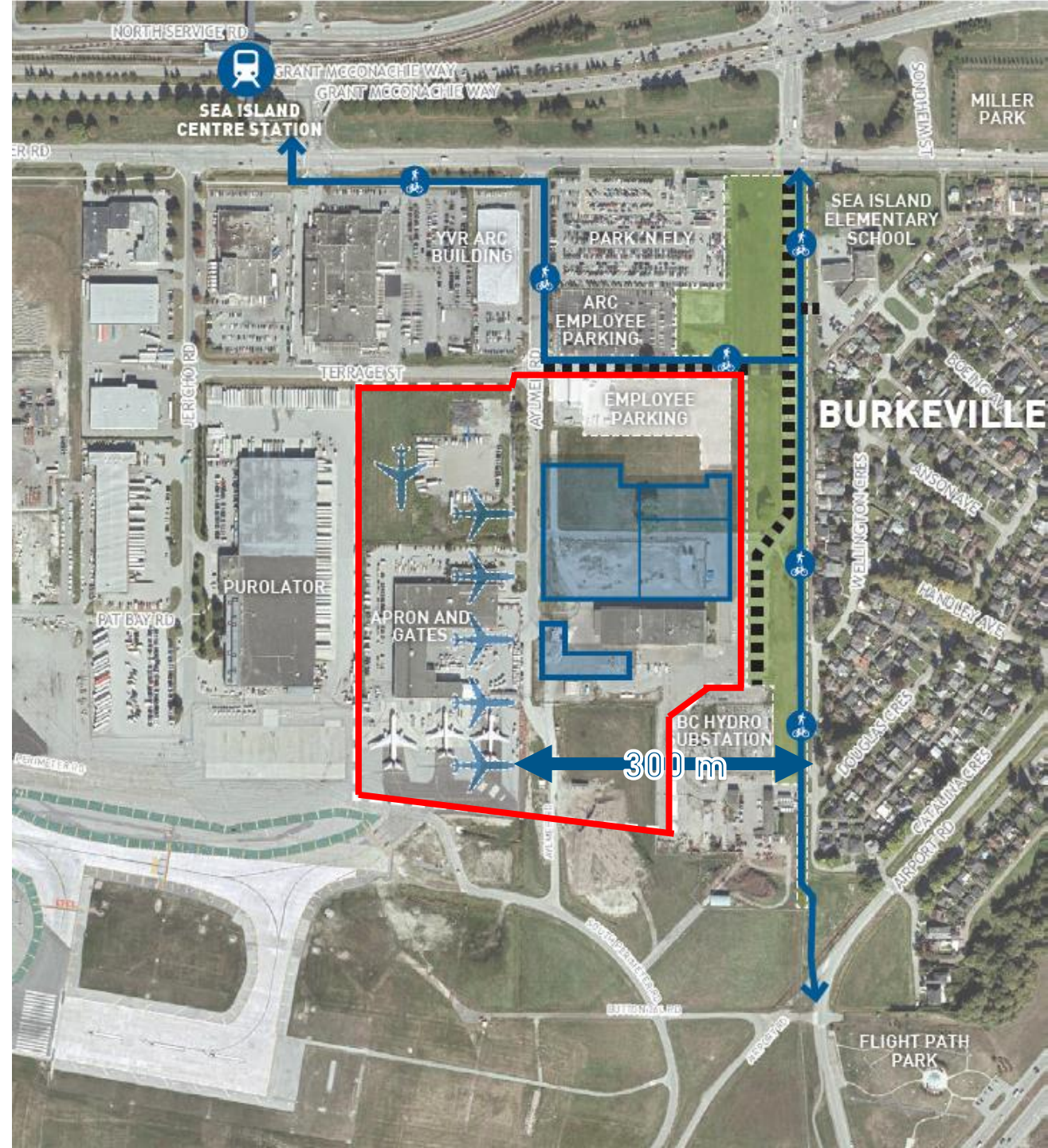
Project Overview

Use and Layout:



Project Overview

- Cargo and logistics, not an aircraft hangar
- Similar use and operations to today
- Similar number of aircraft and other vehicles in the area



Why this site?



DESIGNATED FOR GROUND SIDE
COMMERCIAL AND AIRSIDE LAND USE



ECONOMICALLY SUSTAINABLE AND
COMMERCIALY VIABLE



LOWEST OVERALL GREENHOUSE GAS EMISSIONS,
AND SIMILAR PREDICTED NOISE AND TRAFFIC
LEVELS AS CURRENT USE



HAS DIRECT ACCESS TO AIRFIELD, OTHER
LOGISTICS FACILITIES AND REGIONAL ROAD
NETWORK

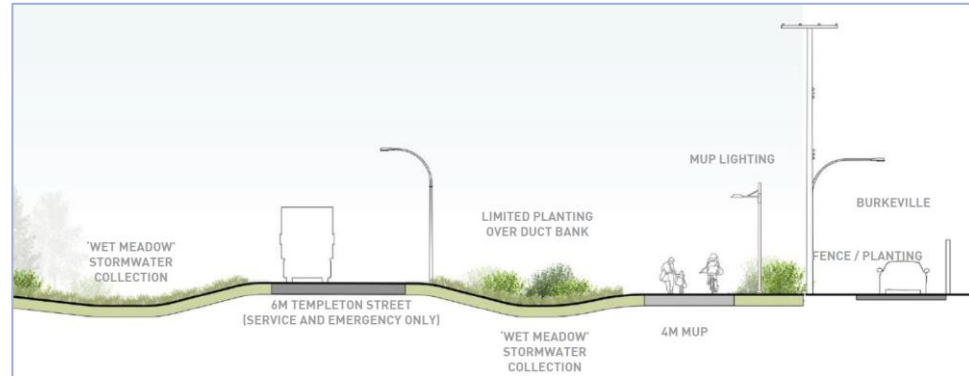


Community Concerns and Mitigations

CONCERN	WHAT WE ARE DOING
Traffic	Reduced access on Templeton Street No access at Terrace Road / Templeton Street Redirect facility traffic to Aylmer Road and Terrace Street
Noise	Noise assessments Building barrier, aircraft orientation, noise barriers Expanded corridor width and increased vegetation
Air Quality	No change in aircraft operations or vehicle movements Modernized energy efficient facility
Loss of Greenspace	Expanded corridor width Enhanced amenity Increased vegetation and trees Tree assessment and viability Minimize tree removal Usable year round space Drainage improvements
Construction & Operations	Monitor & communicate



Traffic



Noise and Air Quality



LAND USE IS CONSISTENT WITH CURRENT OPERATIONS



AIRCRAFT PLANNED TO BE LOCATED ON THE WEST SIDE OF THE FACILITY, WITH ENGINES DIRECTED TO THE WEST



ADDITIONAL NOISE BARRIERS SUCH AS NOISE FENCING WILL BE INSTALLED



SMALLER VEHICLES WILL UNLOAD INSIDE THE BUILDING INSTEAD OF OUTDOOR LOADING BAYS



ALL TRAFFIC (TRUCKS, EMPLOYEES AND CUSTOMERS) WILL ACCESS THE SITE FROM AYLMER ROAD



EMPLOYMENT OF OPERATIONAL BEST PRACTICES TO FURTHER LIMIT NOISE



Loss of Greenspace



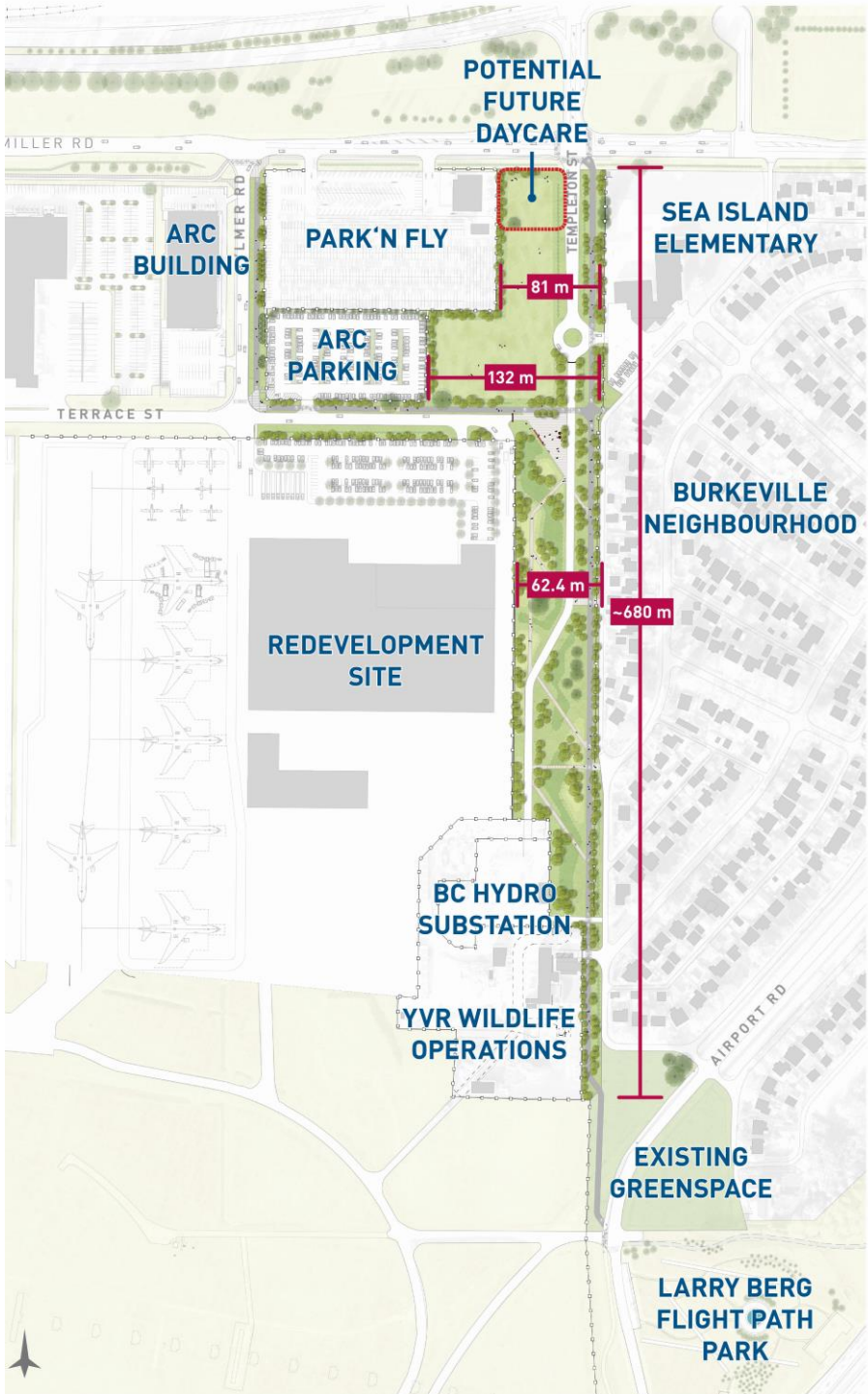
North
Flexible and active community spaces including flexible greenspace and social commons



Middle
Naturalized meadow with walking trails and woodland thickets



South
Multiuse path connects with existing cycling network at Flight Path Park



Templeton Corridor

BEFORE



SOUTH



NORTH



Templeton Corridor

AFTER



Construction and Operations



ENGAGEMENT PROGRAM



Engagement Program



- Presentation – SICA AGM
- Feedback Survey

- 3 Community Advisory Meetings
- 2 Open Houses
- Feedback Survey

- 2 Community Advisory Meetings
- Online Engagement Platform
- Feedback Survey
- Community Info Meeting

- Ongoing Engagement

Objectives

- Understand community priorities
- Learn about how residents use the area
- Request participation
- Communications planning

- Sought feedback on use of Templeton lands
- Preferences for enhancements and mitigations
- Learn how residents would like to stay involved

- Understand preferences to define scope of the Templeton Corridor
- Learn residents' outstanding concerns

- Seek feedback on lighting, building design, and specific noise mitigation measures
- Construction management

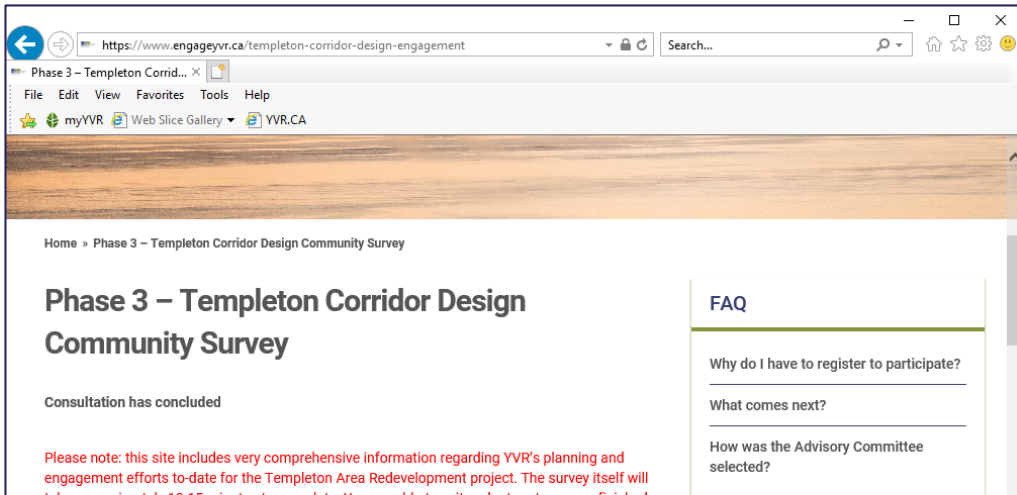


Phase 3 Reporting

We want to hear from you.

Templeton Area Redevelopment
Phase 3 Community Feedback Survey





Home > Phase 3 – Templeton Corridor Design Community Survey

Phase 3 – Templeton Corridor Design Community Survey

Consultation has concluded

Please note: this site includes very comprehensive information regarding YVR's planning and engagement efforts to-date for the Templeton Area Redevelopment project. The survey itself will take approximately 10-15 minutes to complete. You are able to exit and return to your unfinished survey at a later time.

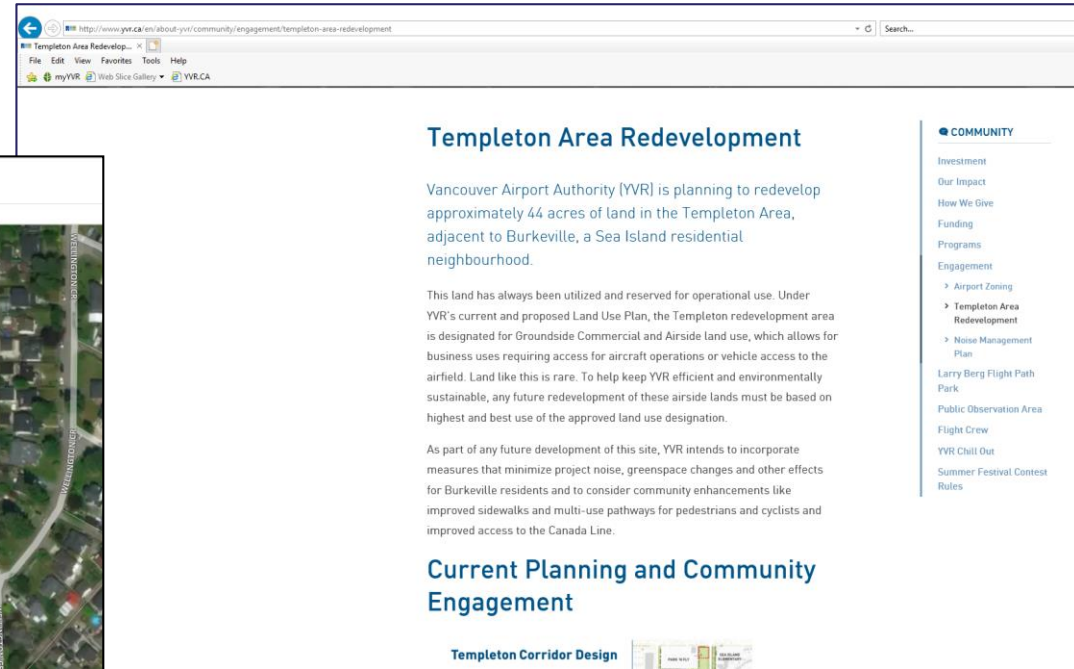
About this Project

YVR has been engaging with the Burkeville community since November 2014. The redevelopment of 44 acres of land in the Templeton Area design phase of engagement (Phase 3) seeks input on:

- The overall design of the corridor space
- Social commons area options

FAQ

- Why do I have to register to participate?
- What comes next?
- How was the Advisory Committee selected?



Templeton Area Redevelopment

Vancouver Airport Authority (YVR) is planning to redevelop approximately 44 acres of land in the Templeton Area, adjacent to Burkeville, a Sea Island residential neighbourhood.

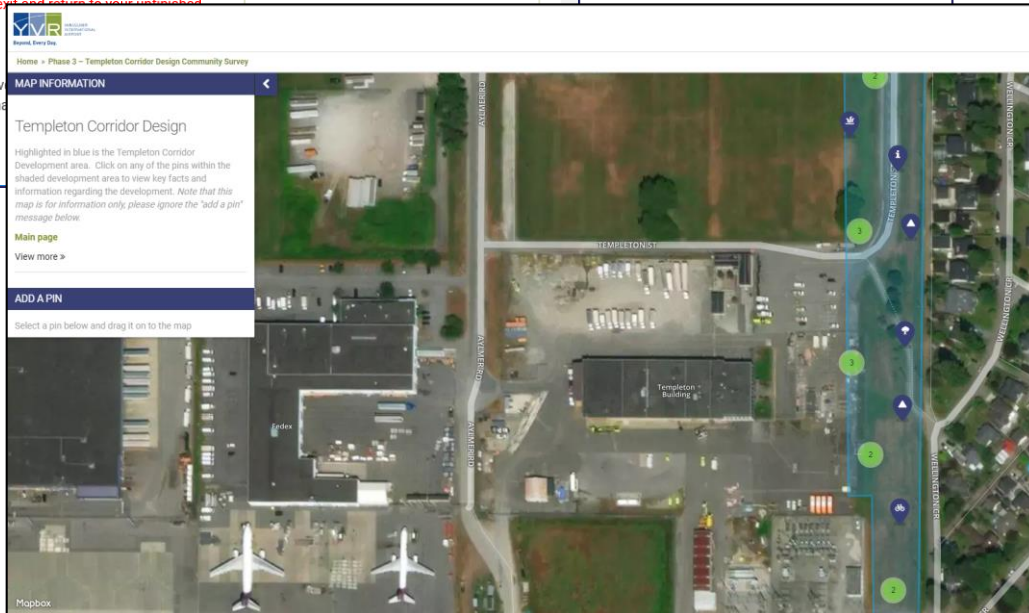
This land has always been utilized and reserved for operational use. Under YVR's current and proposed Land Use Plan, the Templeton redevelopment area is designated for Groundside Commercial and Airside land use, which allows for business uses requiring access for aircraft operations or vehicle access to the airfield. Land like this is rare. To help keep YVR efficient and environmentally sustainable, any future redevelopment of these airside lands must be based on highest and best use of the approved land use designation.

As part of any future development of this site, YVR intends to incorporate measures that minimize project noise, greenspace changes and other effects for Burkeville residents and to consider community enhancements like improved sidewalks and multi-use pathways for pedestrians and cyclists and improved access to the Canada Line.

Current Planning and Community Engagement

Templeton Corridor Design

- Investment
- Our Impact
- How We Give
- Funding
- Programs
- Engagement
 - Airport Zoning
 - Templeton Area Redevelopment
 - Noise Management Plan
 - Larry Berg Flight Path Park
 - Public Observation Area
 - Flight Crew
 - YVR Chill Out
 - Summer Festival Contest Rules



Home > Phase 3 – Templeton Corridor Design Community Survey


MAP INFORMATION

Templeton Corridor Design

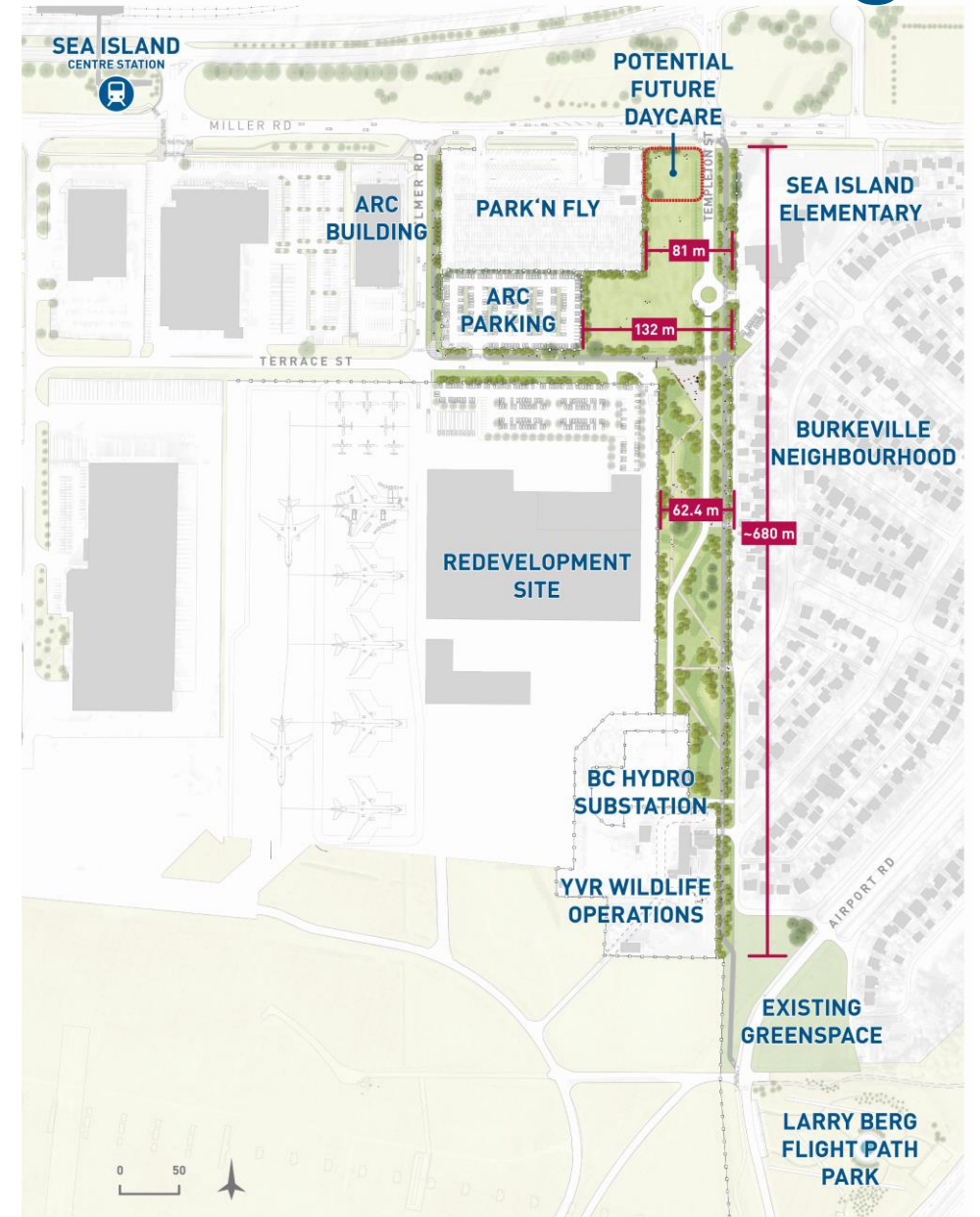
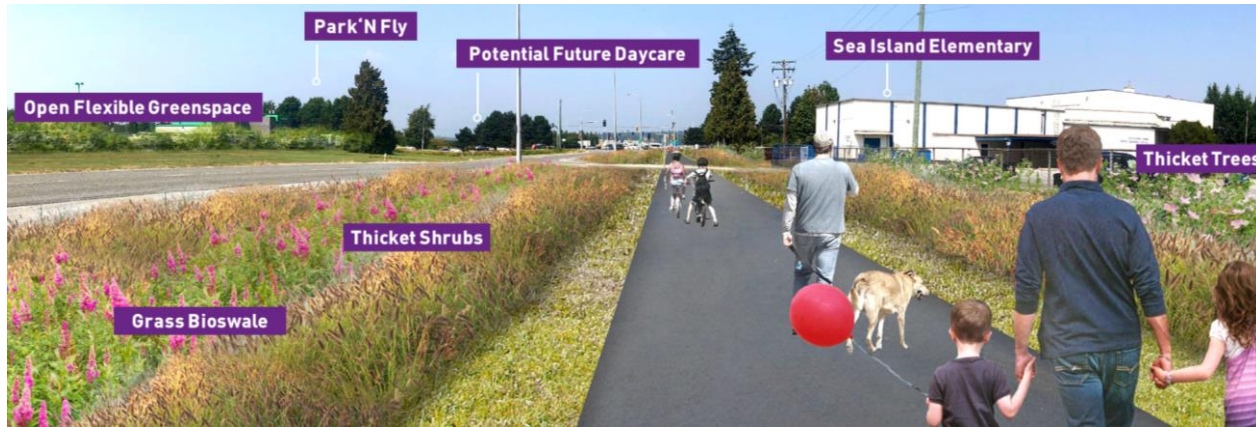
Highlighted in blue is the Templeton Corridor Development area. Click on any of the pins within the shaded development area to view key facts and information regarding the development. Note that this map is for information only, please ignore the "add a pin" message below.

Main page
View more >

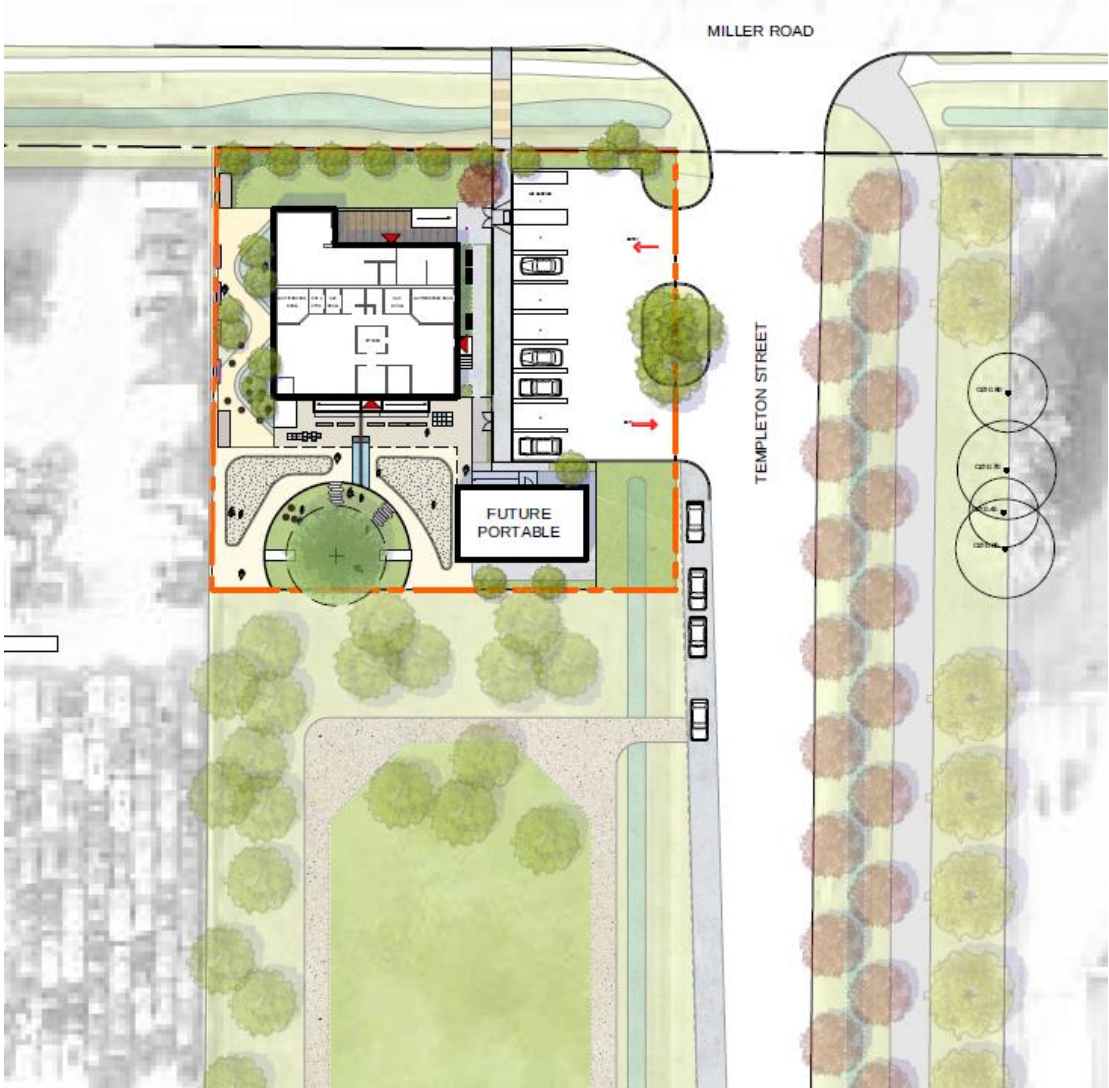
ADD A PIN
Select a pin below and drag it on to the map




Phase 3 Results: Feedback on Corridor Designs



Little Wings Daycare Relocation



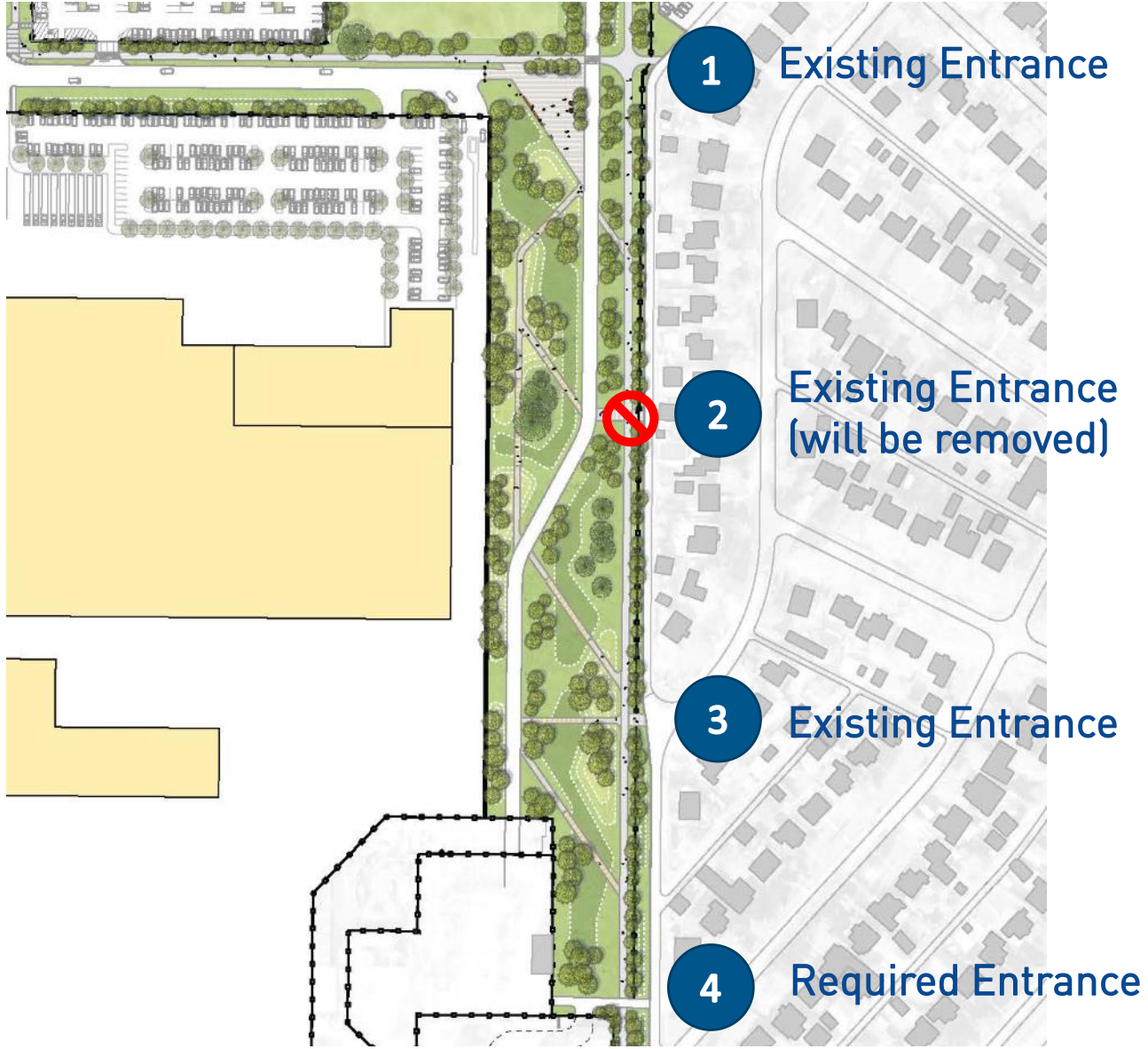
Phase 3 Results: Social Commons



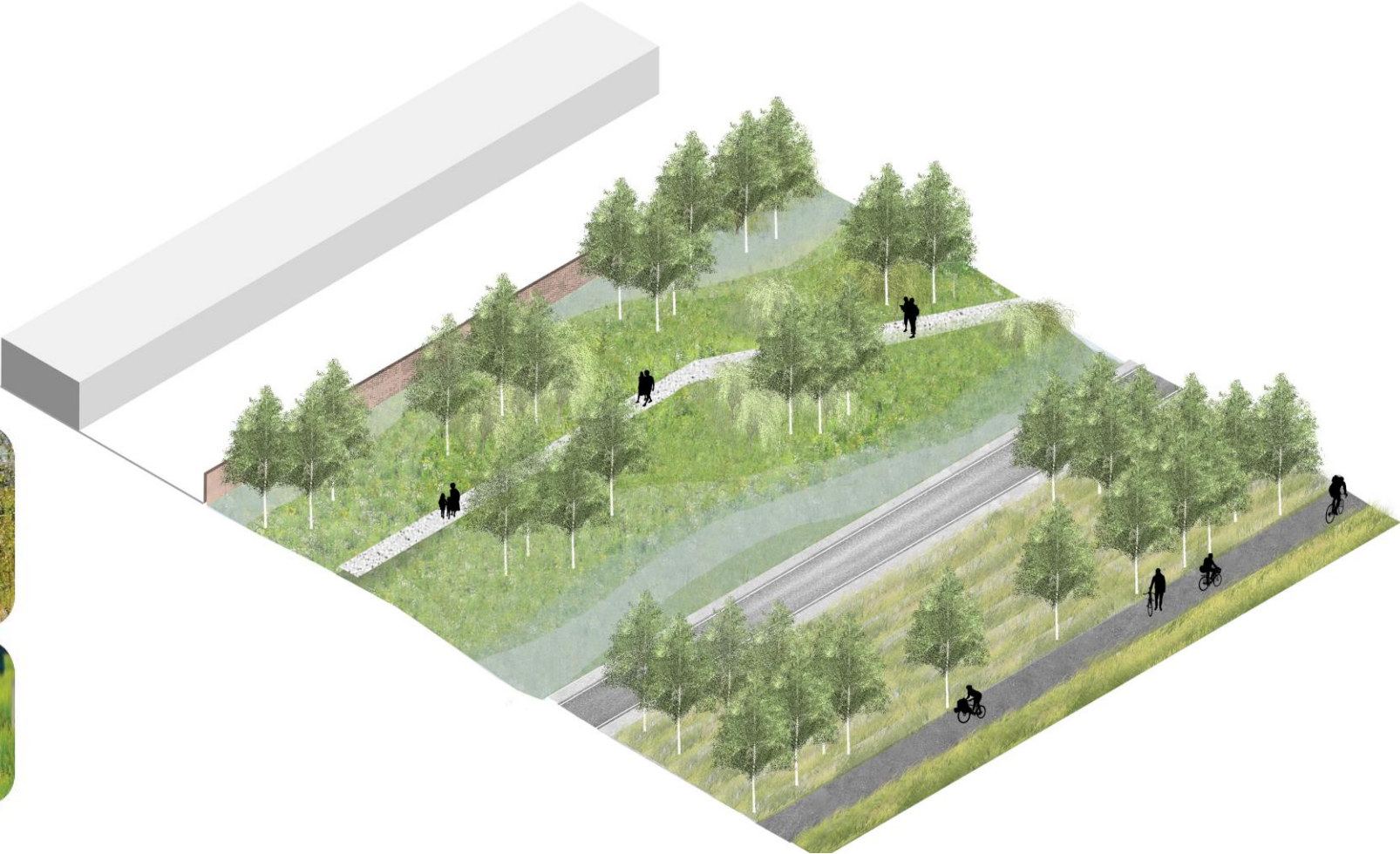
Phase 3 Results: Multi-Use Pathways



Phase 3 Results: Templeton Corridor Access



Phase 3 Results: Trees and Landscaping



NEXT STEPS



Continued Site Remediation Work



Engagement Program



- Presentation – SICA AGM
- Feedback Survey

- 3 Community Advisory Meetings
- 2 Open Houses
- Feedback Survey

- 2 Community Advisory Meetings
- Online Engagement Platform
- Feedback Survey
- Community Info Meeting

- Ongoing Engagement

Objectives

- Understand community priorities
- Learn about how residents use the area
- Request participation
- Communications planning

- Sought feedback on use of Templeton lands
- Preferences for enhancements and mitigations
- Learn how residents would like to stay involved

- Understand preferences to define scope of the Templeton Corridor
- Learn residents' outstanding concerns

- Seek feedback on lighting, building design, and specific noise mitigation measures
- Construction management



QUESTIONS



Getting in touch with YVR

Templeton Project updates: yvr.ca/engagement/Templeton

Construction updates: yvr.ca/construction

Questions: community_relations@yvr.ca

